

# ScanSnap

## S1100i



### Features

- ▶ One of the smallest mobile A4 scanners in the world
- ▶ Speedy "One Touch" scanning
- ▶ Various functions for making your daily work easier and simpler

### Bundled software

- ▶ CardMinder (Win / Mac)

**Simple, Speedy & Compact.**  
**From Paper to PDF in One Touch!**



# ScanSnap S1100i

Bring simple "One Touch" scanning  
to new places!  
Discover new levels of productivity!



## Speedy "One Touch" scanning

The S1100i delivers a 7.5 seconds/page (approximately 8 ppm) scanning speed for color A4 documents at resolutions up to 300 dpi.\*

\* The time for scanning speed was measured from the point a page first enters to the point it fully exits the scanner.

## One of the smallest mobile A4 scanners in the world \*1

The ScanSnap S1100i document scanner pushes the limits of size for extreme portability while delivering smooth A4 size document scanning\*2. All you need is your laptop and one USB cable to scan and share your documents anywhere, anytime.



\*1 This statement was true based on comparisons of A4 document feed type scanners.  
\*2 The S1100i measures approximately 1/4 the size and less than 1/4 the weight when compared to the ScanSnap S1300i.

## Scans plastic cards and other various document types\*

In addition to standard paper types, the S1100i can scan plastic cards like the ones used for membership IDs.

\* Card type ISO 7810, ID-1 format = 86 x 54 mm (supports embossed cards)



## Features for quick digitization

● Dual scan - scanning 2 small sized documents at the same time  
you can scan 2 small sized documents such as business card and receipt at the same time. Simply insert documents continuously to the paper feeding entry to greatly reduce your scanning time and lead to increased efficiency.



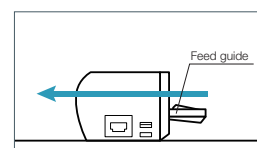
● Automatically stitch a two-page spread  
Even documents larger than A4 size can be scanned without any extra effort. Just fold the large documents in half and the iX100 will automatically stitch the diagram or chart that is spread across two pages after scanning.

## Two selectable paper paths

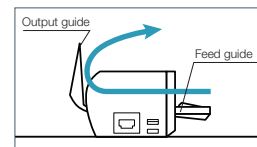
Switch S1100i's output guide to either the folded position for the straight path or the open position for the U-turn path to best suit the document you want to scan.

● Straight path  
Most suitable for scanning post cards, photos, business cards, plastic cards\*, ScanSnap Carrier Sheet (Option), and common office paper.

\* This applies to standard ISO 7810 ID-1 card types.



● U-turn path  
Most suitable for scanning common office paper and you do not need extra space for the document output.



## Continuous Document Feeding (CDF Function)

Even though the S1100i is one of the world's smallest document-feed scanners, you can smoothly scan multiple page documents with remarkable speed. The Continuous Document Feeding function allows you to insert pages one after another without any extra button pressing by detecting when a sheet enters and exits the S1100i.

● Scanning a two-sided document using the CDF Function



1 Set a page of your document face-up into the S1100i and push the Scan button to start the scanning.

2 The S1100i proceeds to scan the front side of that page.

3 The page exits from the top of the scanner which has its paper path set to the U-turn position.

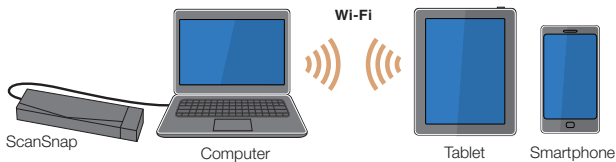
4 Simply reinsert the same page (which exits face-down) without pressing the Scan button to smoothly scan the other side.

5 After you finish scanning your document, press the Scan button again to end the scanning and convert the data to a PDF image file.

## Scans to a greater range of mobile devices

Like all scanners of the ScanSnap Series, the S1100i supports wireless scanning to an iOS or Android mobile device for convenient mobile viewing on ScanSnap Connect Application.

- \* To use the latest ScanSnap functions, download and apply the most recent software update.
- \* ScanSnap Connect Application is available as a free download from the official application distribution service of the device (e.g., Google Play and Apple App Store). The Wi-Fi of the ScanSnap installed computer must be turned on to use this feature.



## Quick Menu saves time

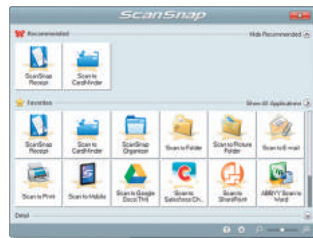
Even first-time ScanSnap user can master the functions by navigating through the Quick Menu. ScanSnap's Quick Menu automatically pops up after scanning to enable you to link the data to an application, quickly and easily. You do not have to remember any complicated procedures; just simply click the icon on screen.

### Quick Menu: Favorites (Windows®)



It can be easily customized to display just your favorites.

### Quick Menu: Recommended (Windows®)



Icons of the recommended application is displayed in priority.

## Automated features for near effortless scanning

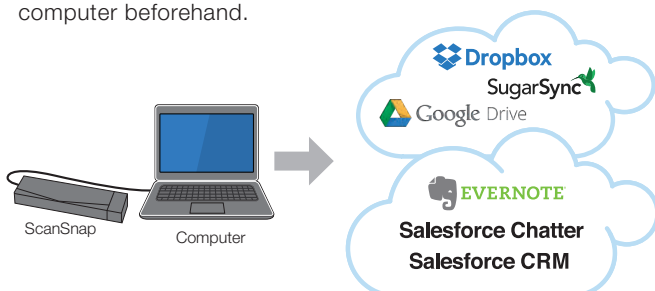
The S1100i features a powerful set of automated image processing functions including Auto deskew, Auto orientation, and Auto color detection. These functions make pre-scan work like sorting pages and changing scan settings unnecessary, so you can scan your documents with minimal effort.

## Easily links documents to clouds

You can scan nearly effortlessly to Evernote, Google Drive, Salesforce, SugarSync and Dropbox, and then conveniently browse the data from computers, tablets or smartphones - anywhere, anytime.

### ScanSnap Folder [Windows®]

Scan to virtually any application or web service that can open, insert or attach a PDF or JPEG file from your Windows computer. In this way, you do not have to save the data in the computer beforehand.



## Making ScanSnap Connect Application more convenient

With ScanSnap Sync, whichever device you are on, you can use scanned data from either ScanSnap Organizer or the mobile app ScanSnap Connect Application. ScanSnap Sync automatically synchronizes scanned data between the two. This gives you more flexibility for data management regardless of your location.

- \* ScanSnap Sync is realized by utilizing a third party cloud service such as Google Drive, OneDrive and Dropbox. For the latest support information of cloud services, please visit the ScanSnap website.

## Efficiently organizes business card data

Business card organizer software

### CardMinder [Windows® / Mac OS]

- Scan your collection of business cards into easy to navigate digital business card holders.
- Import the data from your scanned business cards into Excel, Outlook, Address book (Contacts: OS X v10.8 or later) and other database programs for fast referencing and application.



## Generates Microsoft® Word, Excel®, PowerPoint® files

Top-class OCR engine

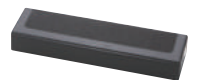
### ABBYY FineReader for ScanSnap [Windows® / Mac OS]

Smoothly scan and convert paper documents into Word, Excel® and PowerPoint® documents.

- \* Only Microsoft® Word and Excel® are available for Mac OS.
- \* Generated images and text may vary from the original.

### ScanSnap S1100i Case (Option)

A convenient carrying case intended for the S1100i is available.  
(See disclaimer under "Options" in the next page)



## General Specifications

Description		ScanSnap S1100i	
Scanner type		CDF (Continuous Document Feeding), Simplex sheetfeed two-way paper path (Straight path, U-turn path)	
Scanning modes		Color, grayscale, monochrome, automatic (color / grayscale / monochrome detection)	
Image sensor		CIS (Contact Image Sensor) x 1	
Light source		3 Color LED (Red / Green / Blue)	
Optical resolution		600 dpi	
Scanning speed (A4 portrait) *1	USB bus powered	Auto mode (default) *2	7.5 seconds / page
		Normal mode (150 dpi)	
		Better mode (200 dpi)	
		Best mode (300 dpi)	
		Excellent mode (600 dpi)	
Document size	Normal mode	A4, A5, A6, B5, B6, Business card, Post card, Letter, Legal and Custom sizes (Max: 216 x 360 mm (8.5 x 14.17 in.), Min: 25.4 x 25.4 mm (1 x 1 in.)) / Automatically recognizes document size	
	Normal mode with Carrier Sheet	Use of a carrier sheet permits the scanning of A3, B4, 11 x 17 in. and photographs as well as the document sizes that are listed above	
	Long paper scanning *3	Max: 216 x 863 mm (8.5 x 34 in.) (300 dpi or less)	
Paper weight (Thickness)		<ul style="list-style-type: none"> <li>● 52 to 209 g/m<sup>2</sup>, or 14 to 56 lb (Straight path)</li> <li>● 52 to 80 g/m<sup>2</sup>, or 14 to 20 lb (U-turn path)</li> <li>● Card</li> <li>Portrait or Landscape (Straight Path)</li> <li>Non-embossed: 0.76 mm or less</li> <li>Embossed: 0.76 + 0.48 mm (ISO7810 Conforming)</li> </ul>	
Paper setting		Front side up	
Interface *4		USB 2.0 (USB 1.1 compatible)	
Power requirement		5 V / 0.5 A (x 1port)	
Power consumption		During operation: 2.5 W or less During sleep mode: 1W or less During Standby (OFF) mode: Less than 0.5 W	
Operation environment		Temperature: 5 to 35° C (41 to 95° F) Relative humidity: 20 to 80% (Non-condensing)	
Dimensions (W x D x H) *5		273 x 47.5 x 34 mm (10.74 x 1.87 x 1.33 in.)	
Device weight		350 g (0.77 lb)	
Environmental compliance		ENERGY STAR® / RoHS	
Multifeed detection		None	
Driver		ScanSnap specific driver ● Windows®: Does not support TWAIN / ISIS™ ● Mac OS: Does not support TWAIN	

\*1 Scanning speeds may vary due to the system environment used. Scanning speed means the time from "Start feeding document" to "Finish output document" after pre-pick and pushing Scan button. In case of "From pushing Scan button", Warm-up time is added. ● Warm-up time: Less than 2 seconds from ready status (Less than 3 seconds after opening chute cover) \*2 Documents measuring approximately 148 mm in length or less are scanned in "Best mode", while other documents are scanned in "Better mode". \*3 The S1100i is capable of scanning documents that exceed A4 size in length. This function is available for all modes except "Excellent mode". \*4 Computer with USB 3.0 will work as USB 2.0 guaranteed only with USB cable provided with product. \*5 When the paper output guide is in the folded position.

## Software

	Windows®	Mac OS
Driver *1	ScanSnap Manager	ScanSnap Manager
Applications	ScanSnap Organizer	ScanSnap Organizer
	ScanSnap Receipt	ScanSnap Receipt
	CardMinder	CardMinder
	ABBYY FineReader for ScanSnap™	ABBYY FineReader for ScanSnap™
	Scan to Microsoft® SharePoint®	-

\*1 TWAIN or ISIS™ applications cannot be used directly.

## Included items

● Safety Precautions	● Setup DVD-ROM	● USB cable
----------------------	-----------------	-------------

## Consumables

Description	Part number	Remarks
Cleaner F1	PA03950-0352	100 ml bottle Used to clean rollers
Cleaning Wipe	PA03950-0419	1 pack (24 packets) Used to clean rollers

This scanner is designed to digitize materials that can be reproduced lawfully, in accordance with applicable copyright regulations and other laws. ScanSnap users are responsible for how they use this scanner. It is imperative that ScanSnap users comply with all applicable local rules and laws, including, without limitation, copyright laws when using this scanner.

\*ABBYY and FineReader are trademarks of ABBYY Software, Ltd. which may be registered in some jurisdictions. ABBYY™ FineReader™ Engine ©ABBYY. OCR by ABBYY. \*Evernote is a registered trademark or trademark of Evernote Corporation. \*Google, Google Drive, Android and Google Play are registered trademarks or trademarks of Google Inc. \*Intel, Pentium, and Intel Core are registered trademarks or trademarks of Intel Corporation in the United States and other countries. \*ISIS™ is a registered trademark of EMC Corporation in the United States. \*Mac, Mac OS, OS X, iPad, iPhone and App Store are trademarks of Apple Inc. \*Microsoft, Windows, Windows Vista, Excel, PowerPoint, SharePoint, Internet Explorer and OneDrive are either registered trademarks or trademarks of Microsoft Corporation in the United States and/or other countries. \*Word is the product of Microsoft Corporation in the United States. \*Salesforce and Salesforce CRM are registered trademarks or trademarks of salesforce.com, inc. in the United States and other countries. \*ScanSnap, ScanSnap logo, ScanSnap Manager, ScanSnap Organizer and CardMinder are registered trademarks or trademarks of PFU Limited in Japan. \*Wi-Fi and Wi-Fi Protected Setup are trademarks of Wi-Fi Alliance. \*Other company names and product names are the registered trademarks or trademarks of the respective companies.

Visit the ScanSnap website for additional information : [www.fujitsu-scansnap.com](http://www.fujitsu-scansnap.com)

## ⚠ Safety Precautions

Be sure to carefully read all safety precautions prior to using this product and use this device as instructed.		Do not place this device in wet or oily areas; or subject it to environments high in dust or moisture. Doing so may result in electrical shock, fire, or product damage.			
Singapore Fujitsu Asia Pte Ltd Tel: +65 6512 7555	Indonesia PT Fujitsu Indonesia Tel: +62 21 570 9330	Malaysia Fujitsu (Malaysia) Sdn Bhd Tel: +60-3 8318 3700	Philippines Fujitsu Philippines, Inc. Tel: +63-2 841 8488	Thailand Fujitsu (Thailand) Co., Ltd. Tel: +66 2 302 1500	Vietnam Fujitsu Vietnam Limited Tel: + 84 4 2220 3113

Specifications are subject to change without notice.

©2017 PFU Limited Printed in some country 2017.4 U-156 AMN 50K6

## ScanSnap S1100i System Requirements

### Windows®

Recommended operating systems		Windows® 10 (32-bit / 64-bit) *1	Windows® 8.1 (32-bit / 64-bit) *1	Windows® 7 (32-bit / 64-bit)
Driver / Applications *2	ScanSnap Manager	Supported	Supported	Supported
	ScanSnap Organizer	Supported	Supported	Supported
	ScanSnap Receipt *3	Supported	Supported	Supported*4
	CardMinder *3	Supported	Supported	Supported
	ABBYY FineReader for ScanSnap™	Supported	Supported	Supported
Hardware requirements *5	Scan to Microsoft® SharePoint®	Supported	Supported	Supported
	CPU *6	Intel® Core™ i5 2.5 GHz or higher		
	Memory capacity *6	4 GB or more		
	Display	1,024 x 768 pixels or higher	800 x 600 pixels or higher	
	Disk capacity *7	3.5 GB or more of free hard disk space		
DVD-ROM drive	Required for installation *8			
USB port *6 *9	USB3.0 *10 / USB2.0 / USB1.1			

\*1 Operate as a desktop application. \*2 Please refer to the ScanSnap website for the latest support information. \*3 Please visit the website of the company for download information. (http://scansnap.fujitsu.com/g-support/en/) \*4 Requires Service Pack 1. \*5 The ScanSnap device may not work if the connected computer does not meet these requirements. \*6 Scanning speeds may drop if recommended CPU, memory capacity and USB 1.1 requirements are not met. \*7 Microsoft .NET Framework 3.5 SP1 will be installed (requires 500 MB of disk space) together with ScanSnap Manager, ScanSnap Organizer or CardMinder for systems that do not have .NET Framework 3.5 SP1 installed. When using "Scan to Google Drive" with ScanSnap Manager/ScanSnap Organizer, users also need to install either .NET Framework 4 or in-place updates of .NET Framework 4. \*8 If you have no DVD-ROM drive, please visit the website of the company. (http://scansnap.fujitsu.com/g-support/en/) \*9 ScanSnap operates on both USB 2.0 and USB 3.0 without any difference in performance. \*10 Some computers do not recognize the ScanSnap when it is connected to a USB 3.0 port. In this case, please use a USB 2.0 port. \* System requirements may change depending on the duration of support and the support policy of the companies that make the software listed in the table above.

### Mac OS

Recommended operating systems		Mac OS X v10.12 (Recommended: v10.12.1 or later) *2	OS X v10.11	OS X v10.10	OS X v10.9 (Recommended: v10.9.5 or later)	OS X v10.8 (Recommended: v10.8.5 or later)	Mac OS X v10.7 (Recommended: v10.7.5 or later)
Driver / Applications *1	ScanSnap Manager	Supported	Supported	Supported	Supported	Supported	Supported
	ScanSnap Organizer	Supported	Supported	Supported	Supported	Supported	Supported
	ScanSnap Receipt *2	Supported	Supported	Supported	Supported	Supported	Supported
	CardMinder	Supported	Supported	Supported	Supported	Supported	Supported
	ABBYY FineReader for ScanSnap™ *3	Supported	Supported	Supported	Supported	Supported	Supported
Hardware requirements *4	CPU *5	Intel® Core™ i5 2.5 GHz or higher					
	Memory capacity *5	4 GB or more					
	Display	1,024 x 768 pixels or higher					
	Disk capacity	2.5 GB or more of free hard disk space					
	DVD-ROM drive	Required for installation *6					
USB port *5 *7	USB3.0 *8 / USB2.0 / USB1.1						

\*1 Please refer to the ScanSnap website for the latest support information. \*2 Please visit the website of the company for download information. (http://scansnap.fujitsu.com/g-support/en/) \*3 Compatibility may differ depending on the software's version. \*4 The ScanSnap device may not work if the connected computer does not meet these requirements. \*5 Scanning speeds may drop if recommended CPU, memory capacity and USB 1.1 requirements are not met. \*6 If you have no DVD-ROM drive, please visit the web site of the company. (http://scansnap.fujitsu.com/g-support/en/) \*7 ScanSnap operates on both USB 2.0 and USB 3.0 without any difference in performance. \*8 Some computers do not recognize the ScanSnap when it is connected to a USB 3.0 port. In this case, please use a USB 2.0 port. \* System requirements may change depending on the duration of support and the support policy of the companies that make the software listed in the table above.

## Options

Description	Part number	Remarks
ScanSnap S1100i Case *1	PA03610-0001	Intended for ScanSnap S1100i and included items
ScanSnap Carrier Sheets *2	PA03360-0013	5 Carrier Sheets Intended for ScanSnap iX500, iX100, S1500, S1500M, S1100i, S1100

\*1 This product has been especially designed for storing and carrying ScanSnap S1100i. Please note that this product is not guaranteed to withstand damage by excessive shock or external pressure. \*2 Although ScanSnap Carrier Sheets have a listed lifespan of 500 scans, the lifespan may vary with usage. ScanSnap Carrier sheets are intended to scan paper documents with weights of 127 g/m<sup>2</sup> or less. They also support the scanning of folded documents that are as large as 216 x 297 mm.

**POWERED BY**




ABBYY™ FineReader™ Engine ©ABBYY. OCR by ABBYY. ABBYY and FineReader are trademarks of ABBYY.





PFU Limited, a Fujitsu company, has determined that this product meets the ENERGY STAR® guidelines for energy efficiency. ENERGY STAR® is a registered trademark of the United States.